

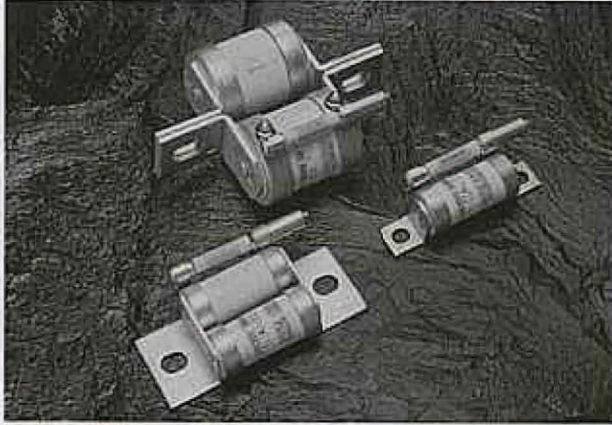
600FHM SERIES

600V AC, DC

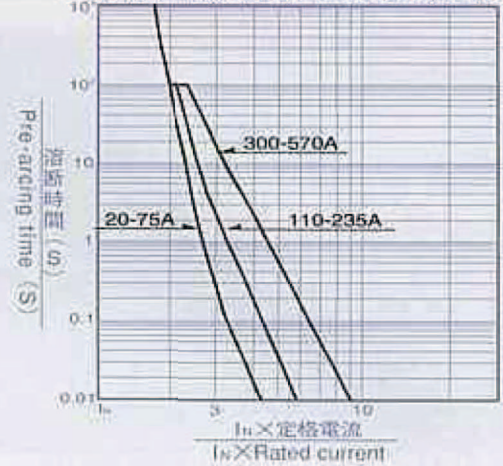
- 定格電圧 600V AC, DC ●定格電流 20~570A
- しゃ断容量 600V-100KA AC,DC (L/R 10mS)
- Voltage Rating 600V AC, DC ●Current Rating 20~570A
- Breaking Capacity 600V-100KA AC,DC (L/R 10mS)

参考用

生産終了品



○溶断時間-電流特性曲線 (Time Current curve)



◆仕様/Specifications

| Type | | 定格電流 Ampere Rating | 溶断 I ² t Pre-arc I ² t (A ² S) | 全しゃ断 I ² t Total I ² t (A ² S) at 600V | 外形寸法 Dimensions (m/m) | | | | | | | | | | | 重量 (g) | | Fig | |
|-------------------|----------------|-----------------------|--|--|-----------------------|----|----|----|----|------|-----|-----|----|----|-----|--------|-----|-----|-----|
| Without indicator | With indicator | | | | A | B | C | D | E | F | G | T | W | H | N | M | g | | pos |
| 600FHM-20 | 600FHM-20S | 20A | 15 | 150 | 76 | 62 | 48 | 24 | 20 | 8 | 6.5 | 2 | 14 | 22 | 75 | - | 52 | 20 | |
| 600FHM-30 | 600FHM-30S | 30A | 40 | 370 | | | | | | | | | | | | | | | |
| 600FHM-35 | 600FHM-35S | 35A | 95 | 870 | | | | | | | | | | | | | | | |
| 600FHM-55 | 600FHM-55S | 55A | 240 | 2,100 | | | | | | | | | | | | | | | |
| 600FHM-75 | 600FHM-75S | 75A | 370 | 3,200 | | | | | | | | | | | | | | | |
| 600FHM-110 | 600FHM-110S | 110A | 950 | 7,600 | 89 | 70 | 48 | 50 | 42 | 11 | 8.5 | 1.6 | 34 | 22 | 82 | - | 120 | 10 | 2 |
| 600FHM-150 | 600FHM-150S | 150A | 2,500 | 20,000 | | | | | | | | | | | | | | | |
| 600FHM-200 | 600FHM-200S | 200A | 3,700 | 29,000 | | | | | | | | | | | | | | | |
| 600FHM-235 | 600FHM-235S | 235A | 6,000 | 44,000 | | | | | | | | | | | | | | | |
| 600FHM-300 | 600FHM-300S | 300A | 15,000 | 105,000 | | | | | | | | | | | | | | | |
| 600FHM-325 | 600FHM-325S | 325A | 24,000 | 170,000 | 110 | 82 | 51 | 47 | 37 | 15.5 | 11 | 6 | 25 | 43 | 90 | 80 | 450 | 5 | 3 |
| 600FHM-350 | 600FHM-350S | 350A | 32,000 | 220,000 | | | | | | | | | | | | | | | |
| 600FHM-400 | 600FHM-400S | 400A | 40,000 | 270,000 | | | | | | | | | | | | | | | |
| 600FHM-500 | 600FHM-500S | 500A | 63,000 | 420,000 | | | | | | | | | | | | | | | |
| 600FHM-570 | 600FHM-570S | 570A | 90,000 | 590,000 | | | | | | | | | | | | | | | |
| | | | | | 130 | 97 | 53 | 55 | 45 | 15.5 | 11 | 8 | 35 | 53 | 101 | 98 | 770 | 3 | 3 |

●全しゃ断 I²t (Total I²t) は AC600V-100KA による。 ●GEC, BRUSH 及び 660GHW75-160A と互換性が有ります。

◆外形図 : Outline Dimensional Drawings (m/m)

fig 1

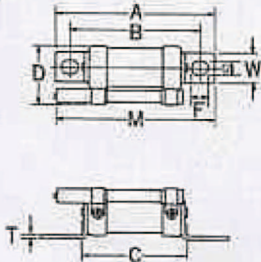


fig 2

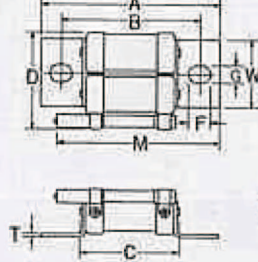
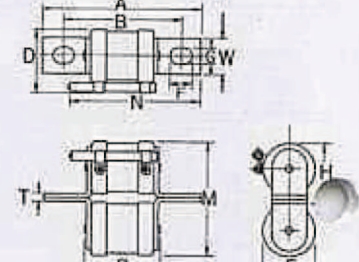


fig 3



48・96LF SERIES

48V・96V DC

- バッテリー自動車用リミッターヒューズ
- For Battery Operated System Limiter Fuses.

■48LF SERIES (48V) 窓付 With Window

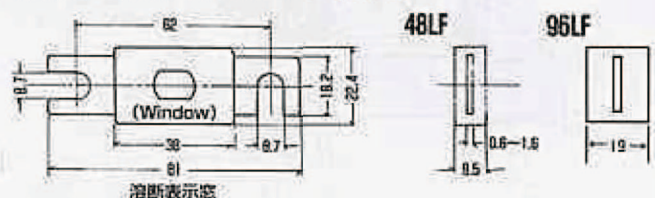
| Type | 定格電流 Ampere Rating |
|----------|-----------------------|
| 48LF-40 | 40A |
| 48LF-50 | 50A |
| 48LF-80 | 80A |
| 48LF-90 | 90A |
| 48LF-100 | 100A |
| 48LF-150 | 150A |
| 48LF-175 | 175A |
| 48LF-200 | 200A |
| 48LF-225 | 225A |
| 48LF-275 | 275A |
| 48LF-325 | 325A |
| 48LF-350 | 350A |
| 48LF-400 | 400A |
| 48LF-500 | 500A |

■96LF SERIES (96V)

| Type | 定格電流 Ampere Rating |
|----------|-----------------------|
| 96LF-40 | 40A |
| 96LF-50 | 50A |
| 96LF-80 | 80A |
| 96LF-90 | 90A |
| 96LF-100 | 100A |
| 96LF-150 | 150A |
| 96LF-175 | 175A |
| 96LF-200 | 200A |
| 96LF-225 | 225A |
| 96LF-275 | 275A |
| 96LF-325 | 325A |
| 96LF-350 | 350A |
| 96LF-400 | 400A |
| 96LF-500 | 500A |



◆外形図 : Dimensions (mm)



●400A500Aは受注生産。